

Human TROP2 Protein; His Tag

Product Information

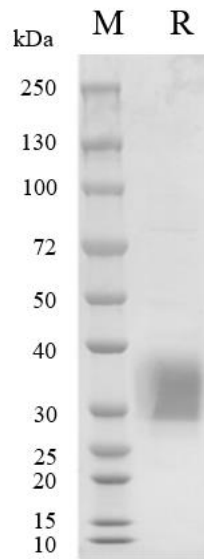
Product Name	Human TROP2 Protein; His Tag
Storage temp.	Store at $\leq -70^{\circ}\text{C}$, stable for 6 months after receipt. Recommend to aliquot the protein into smaller quantities for optimal storage. Please minimize freeze-thaw cycles.
Catalog# / Size	GM-87609RP-100 / 100 μg GM-87609RP-1000 / 1 mg

Protein Information

Alternative Names	TACSTD2,GA733-1,M1S1,TROP-2
Source	Human TROP2 Protein; His Tag (GM-87609RP) is expressed from human 293 cells (HEK-293). It contains AA Thr 88 - Thr 274 (Accession # P09758-1). This protein carries a His tag at the C-terminus.
Purity	> 95% as determined by SDS-PAGE
Endotoxin	< 1 EU/ μg , determined by LAL gel clotting assay
Predicted Mol Mass	21.3 KDa
Formulation	Supplied as a 0.2 μm filtered solution of PBS, pH7.4.
Description	<p>Trop2 protein (Tumor-associated calcium signal transducer 2) is a transmembrane protein widely expressed in the human body, especially highly expressed in epithelial cells and various cancer cells. It is considered a cell surface receptor involved in cell signaling, cell adhesion, cell proliferation, and other biological processes.</p> <p>The expression level of Trop2 protein in cancer is closely related to the invasiveness and prognosis of tumors. Studies have shown that the high expression of Trop2 protein in various cancers is associated with tumor proliferation, metastasis, and drug resistance. Therefore, Trop2 protein has become an important biomarker for cancer treatment and prognosis assessment.</p> <p>Trop2 protein has also been considered a potential therapeutic target. Some studies suggest that targeting Trop2 protein can effectively inhibit tumor growth and metastasis. Therefore, research on Trop2 protein not only helps to deepen our understanding of the mechanisms of cancer occurrence and development but also provides important clues for the development of new targeted treatment strategies.</p>

Version:3.3 Revision Date:25/12/2023

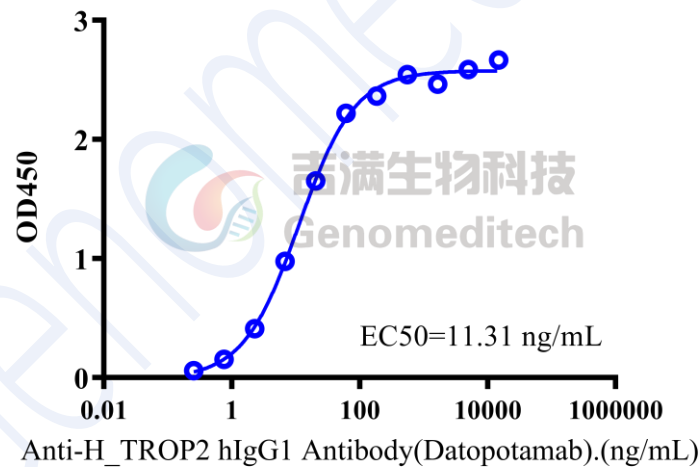
SDS-PAGE



On SDS-PAGE under reducing (R) condition. The gel was stained overnight with Coomassie Blue. The purity of the protein is greater than 95%.

Bioactivity-ELISA

Human TROP2 Protein; His Tag, ELISA 0.1 μ g Human TROP2 Protein; His Tag of per well



Human TROP2 Protein; His Tag (Catalog # GM-87609RP) was immobilized at 1 μ g/ml (100 μ L/well). Increasing concentrations of Anti-H_TROP2 hIgG1 Antibody(Datopotamab) (Catalog # GM-26561AB) were added.